



PRODUCT DESCRIPTION

The BMWS-E-D-SP-U4BT-BLE-SR-WH is a self-powered switch that converts the mechanical energy generated from button presses into electrical energy for operation. Each press on a button generates a Bluetooth signal that sends data packets to the associated BlueMesh network.

ORDERING INFORMATION

Description

Bluetooth® Wireless Kinetic Switch

Part Number

BMWS-E-D-SP-U4BT-BLE-SR-WH

TECHNICAL DATA

Type	Push Button Switch
Number of buttons	4
Power Supply	Self-powered, no battery required
Wireless Data Rate	1Mbps
Transmit Power	0 dBm
Transmission Distance	164ft/50m (outdoors) 82ft/25m (indoors)
Operating Temperature	-4°F to 131°F (-20°C to 55°C)
Certifications	FCC certified
Lifetime	≥100,000 times
Shell Material	PC
Installation Method	Screw locking
Dimension	L4.13 x W1.69 x H1 inch L105 x W43 x H25.5 mm

FEATURES

- Bluetooth® Wireless Kinetic Switch.
- Self-powered wall remote, no battery replacement or re-installation costs.
- Manage all lights, devices, groups, and scenes with color temperature adjustment, dimming, and automation triggering (resume/start).

Smart Control

Using Bluetooth® 5.0, it transmits signals up to 164ft/50m outdoors and 82ft/25m indoors for seamless integration into smart lighting networks.

Durable Construction

Built with a PC shell, it withstands over 100,000 presses and operates in temperatures from -4°F to 131°F (-20°C to 55°C).

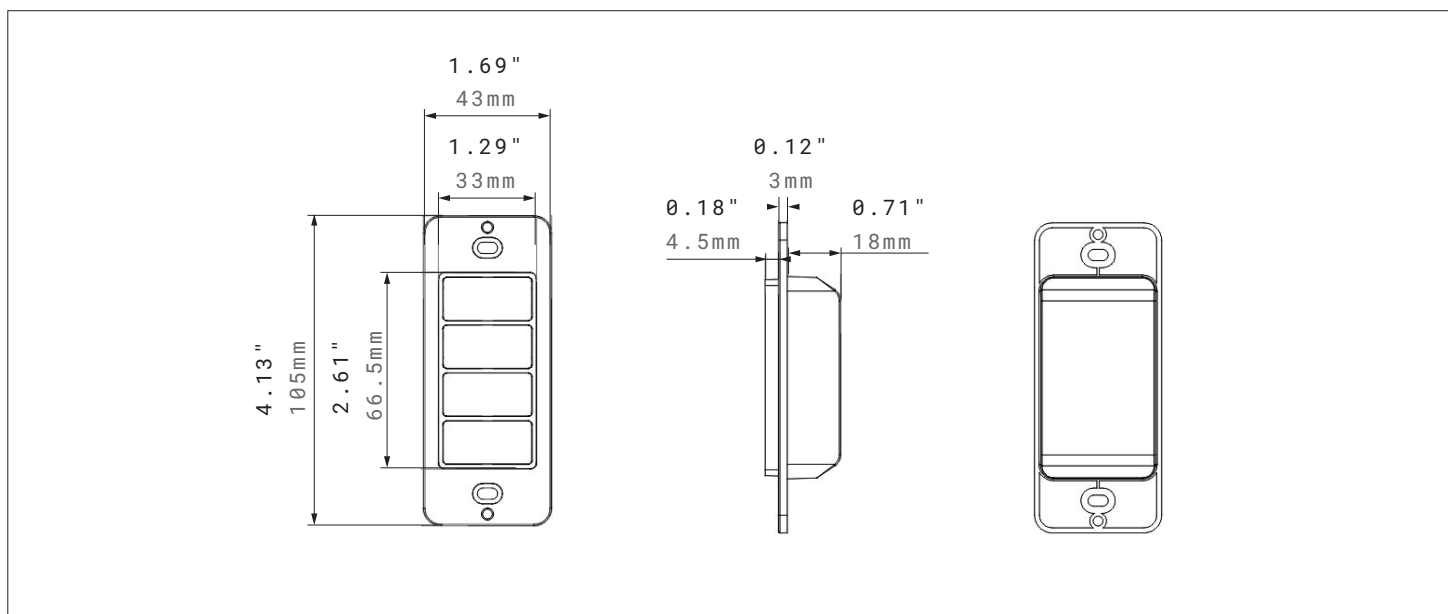
Flexible Installation

Supports screw locking with multiple color options to match interior aesthetics.

Color Options

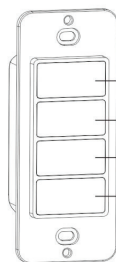


DIMENSIONS



INSTALLATION

There are arrows on the back of the switch to indicate the proper orientation, with the arrow pointing upwards.



Press to Turn ON. Hold to Dim Up/Brighten.

Press to Turn OFF. Hold to Dim Down.

Scene A / Raise CCT

Scene B / Lower CCT

Key Functions

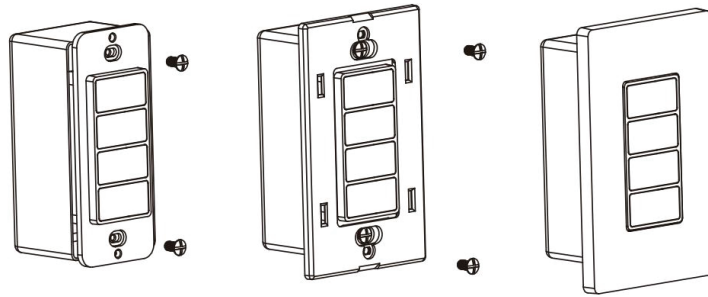
Once you have distinguished the orientation of the switch buttons, you can determine the function corresponding to each button.

The functions of the buttons, in order from top to bottom:

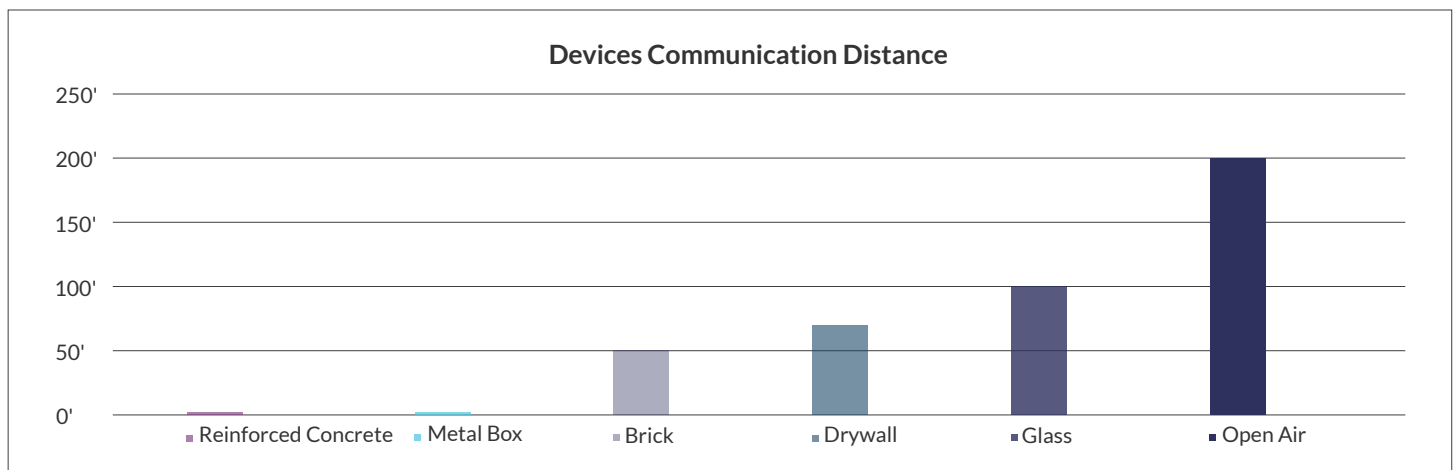
1. Click to turn on the light, hold to brighten.
2. Click to turn off the light, hold to dim down.
3. Click to activate Scene A, hold to raise color temperature (Cooler White).
4. Click to activate Scene B, hold to lower color temperature (Warmer White).

NOTE: Color temperature adjustments are only available for areas where a compatible dimmable white light fixture and the appropriate version of BlueMesh firmware have been added.

INSTALLATION



1. Screw the switch to the junction box.
2. Lock the switch panel to the switch with screws.
3. Attach the panel bezel to the panel.



WARRANTY

5 years limited warranty.