



PRODUCT DESCRIPTION

The BMWS-E-D-SP-E4BT-BLE-SR-WH is a self-powered switch that converts the mechanical energy generated from button presses into electrical energy for operation. Each press on a button generates a Bluetooth signal that sends data packets to the associated BlueMesh network.

ORDERING INFORMATION

Description

2 Gang Bluetooth® Kinetic Switch

Part Number

BMWS-E-D-SP-E4BT-BLE-SR-WH

TECHNICAL DATA

Type	Push Button Switch
Number of buttons	4
Power Supply	Self-powered
Bluetooth Version	5.0
Communication Mode	BLE
Transmission Power	0 dBm
Transmission Distance	66ft/20m (outdoors) 33ft/10m (indoors)
Operating Temperature	-4°F to 131°F (-20°C to 55°C)
Certifications	FCC certified
Lifetime	≥100,000 presses
Shell Material	PC, glass
Installation Method	Tape mounting / Screw locking

FEATURES

- 2 Gang Bluetooth Kinetic Switch.
- Self-powered wall remote, no battery replacement or re-installation costs.
- Manage all lights, devices, groups, and scenes with color temperature adjustment, dimming, and automation triggering (resume/start).

Smart Control

Using Bluetooth® 5.0, it transmits signals up to 66ft(20m) outdoors and 33ft(10m) indoors for seamless integration into smart lighting networks.

Durable Construction

Built with PC and glass materials, it withstands over 100,000 presses and operates in temperatures from -4°F to 131°F (-20°C to 55°C).

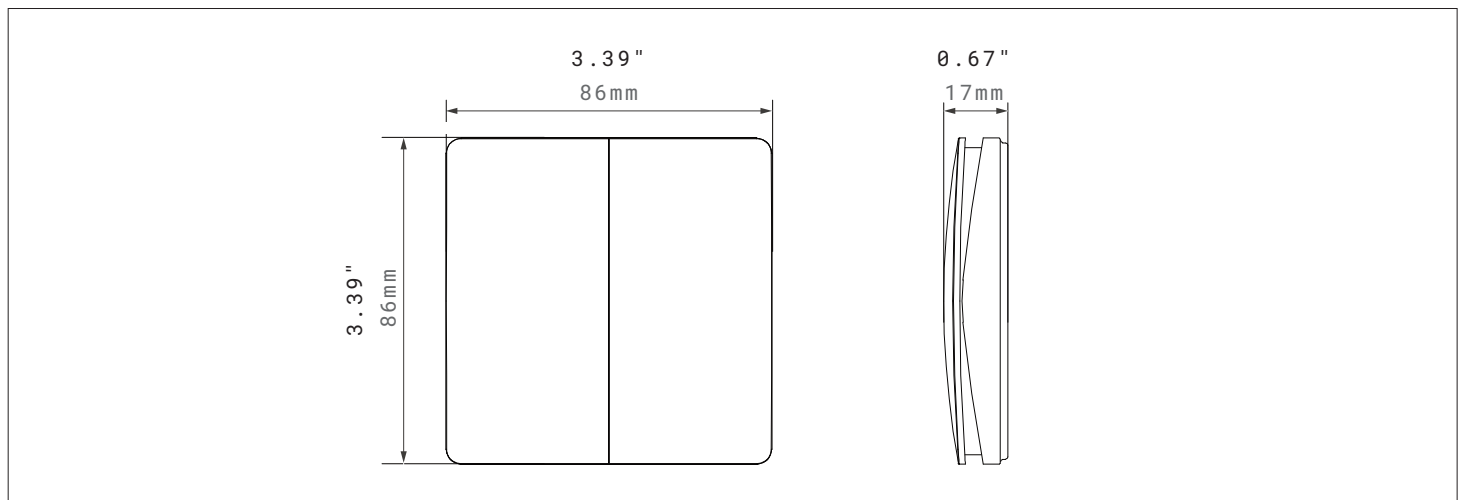
Flexible Installation

Supports tape mounting or screw locking, with multiple color options to match interior aesthetics.

Color Options



DIMENSIONS

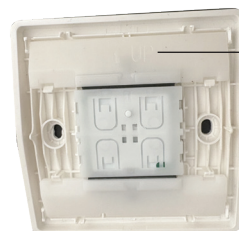


INSTALLATION

Distinguish the top and bottom of the switch according to the laser engraved text on the back of the switch.



Alternatively, remove the switch panel to confirm which side of the switch is to face upward. Refer to the figure on the next page for details.



Install the switch with the "UP" text oriented upward on the wall.

Key Functions

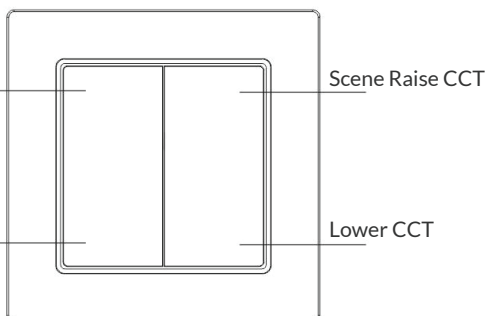
Once you have distinguished the orientation of the switch buttons, you can determine the function corresponding to each button.

Press to Turn ON.

Hold to Dim Up
(Brighten).

Press to Turn OFF.

Hold to Dim Down.

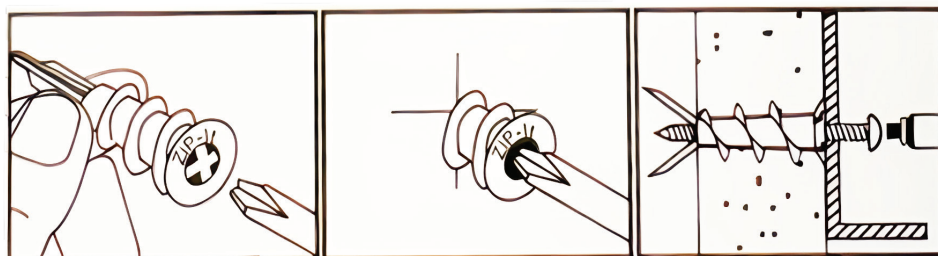


Left Switch	Top Button: Click to turn on the light, hold to brighten.
	Down Button: Click to turn off the light, hold to brighten.
Right Switch	Top Button: activate Scene A, hold to raise color temperature (Cooler White).
	Down Button: Click to activate Scene B, hold to lower color temperature (Warmer White).

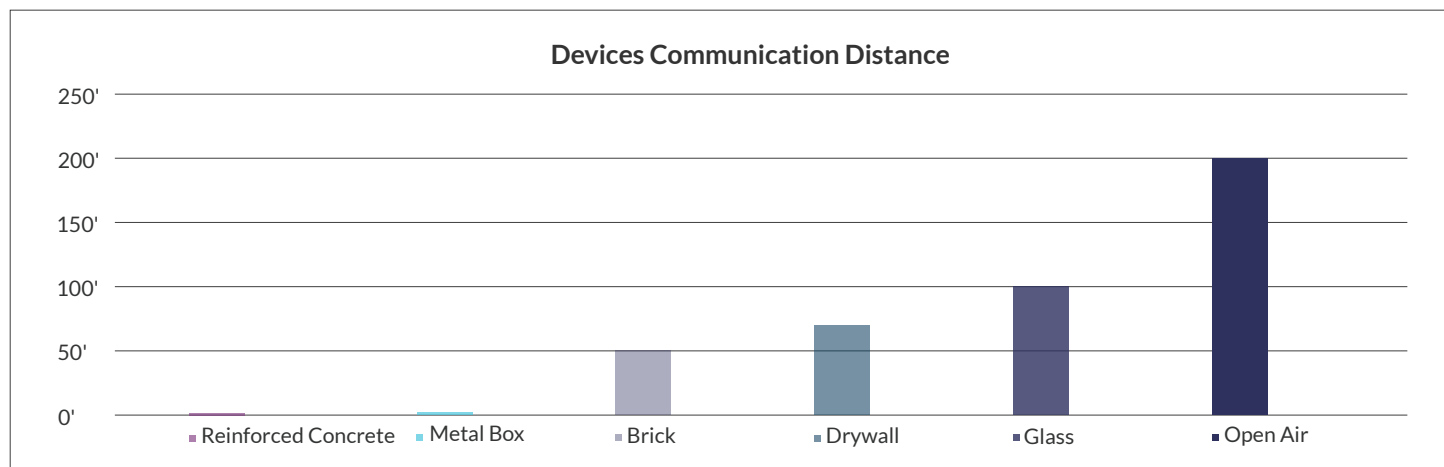
NOTE: Color temperature adjustments are only available for areas where a compatible dimmable white light fixture and the appropriate version of Silclair firmware have been added.

INSTALLATION

Self-Drilling Drywall Anchors



Ref#: 20250801



WARRANTY

5 years limited warranty.