

PRODUCT DESCRIPTION

The BMS-S7-MSW-DC2-BLE-SR Microwave Bluetooth Sensor delivers high-performance motion detection for industrial lighting systems. By integrating microwave sensing with Bluetooth® mesh networking, it provides broad coverage and flexible wireless control capabilities.

ORDERING INFORMATION

Description

Bi-level Microwave (MSW) Occupancy Sensor with Bluetooth Mesh feature

Part Number

BMS-S7-MSW-DC2-BLE-SR

TECHNICAL DATA

Type	Microwave Occupancy Sensor
Input Power	10-14VDC, >50mA
Control Output	0-10V, max. 25mA sinking current
HF System	5.8GHz+75MHz
Transmission Power	<0.2mW
Mounting Height	20ft(6m) max.
Max Bluetooth Range	100ft(30m), typical outdoor
Detection Angle	360°
Operating Temperature	-40°F to 158°F(-40°C to 70°C)
IP Rating	20
Antenna	Onboard
Connector	Low Voltage connector

FEATURES

- High-end trim, zoning, continuous bi-level dimming.
- Magnetic reset and LED Motion indicator available.

Bluetooth Mesh Networking

The sensor relays signals via a self-healing mesh network, extending control range up to 100ft(30m) and enabling centralized management of compatible devices.

Range may vary based on environmental conditions.

Advanced Microwave Sensing

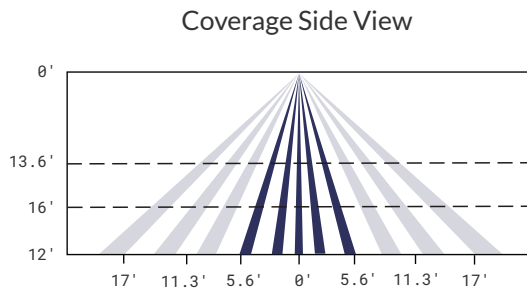
The 5.8GHz microwave sensor detects motion with high accuracy, ideal for both high bay and low bay applications and challenging environments.

User-Friendly Design

Features an LED motion indicator, magnetic reset, and low voltage connector for easy installation and maintenance.

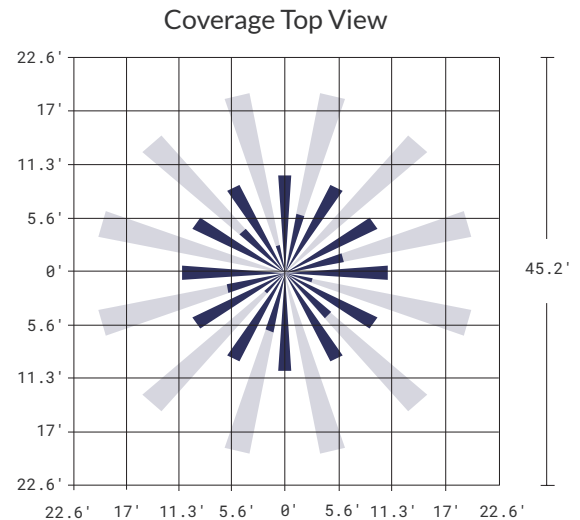
To reset: touch the top of the sensor for 5 seconds.

DETECTION AREA

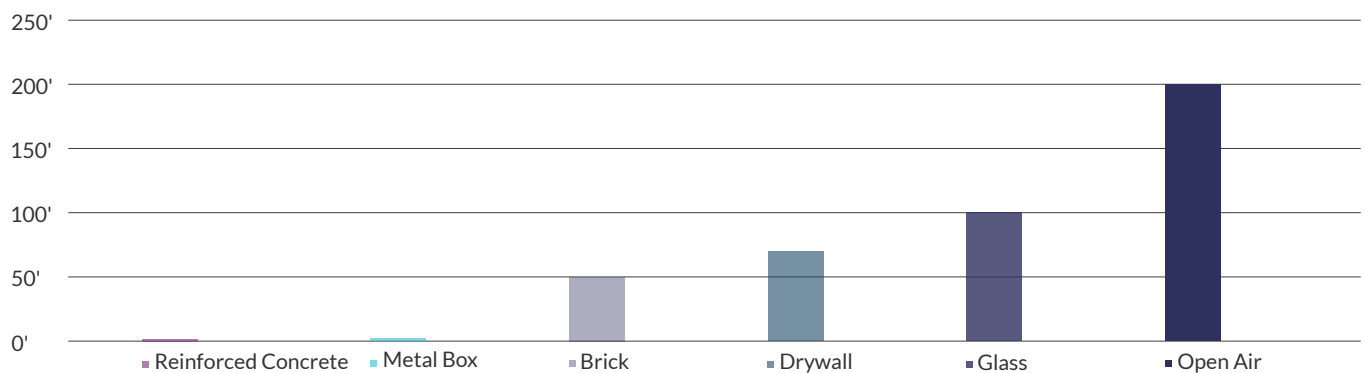


The detection area for movement can be roughly divided into two parts.

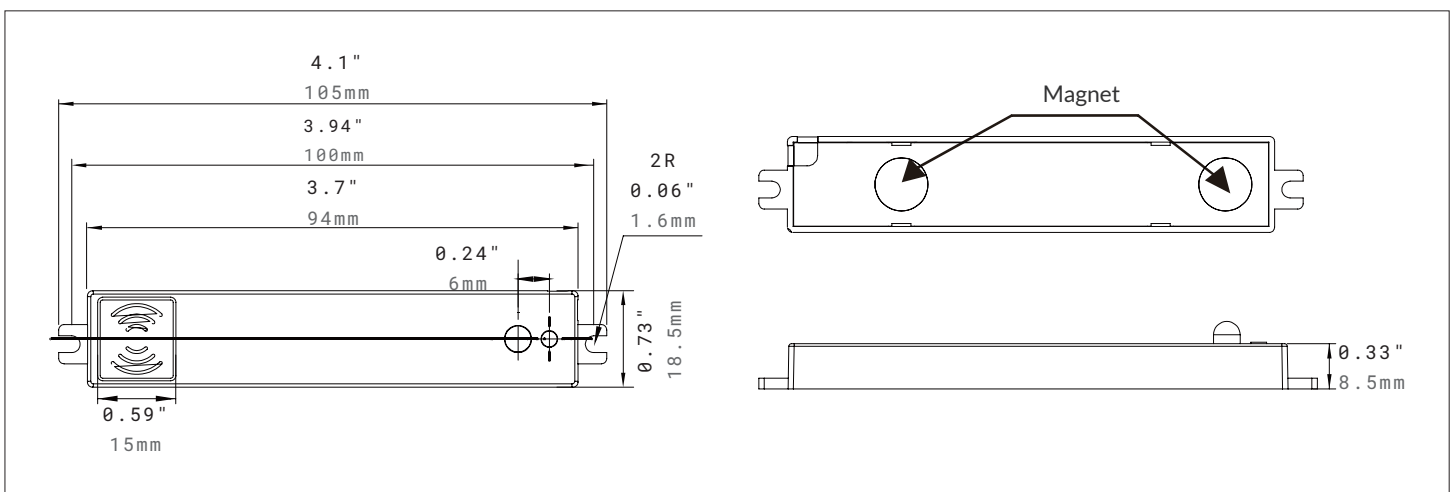
- Slow movement (person moving $< 1.0/s$ or $0.3m/s$)
- Quick movement (person moving $> 1.3/s$ or $0.4m/s$)



Devices Communication Distance

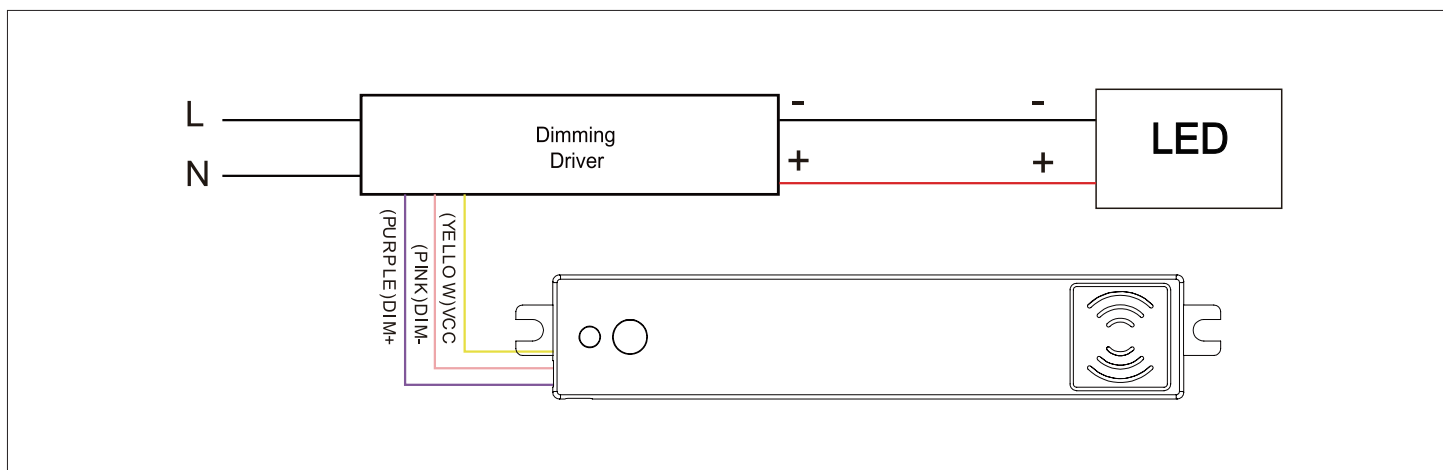


DIMENSIONS



WIRING DIAGRAM

Ref#: 20250804



WARRANTY

5 years limited warranty.