



APPLICATIONS

BMWS-E-D-SP-U4BT-BLE-SR-WH is a self-powered switch that converts the mechanical energy generated from button presses into electrical energy for operation. Each press on a button generates a Bluetooth signal that sends data packets to the associated BlueMesh network.

TECHNICAL DATA

Switch Type : Push button
 Number of keys button : 4
 Power Supply : Self-powered, no battery required
 Wireless Data Rate : 1Mbps
 Transmit Power : 0dBm
 Distance : 50m/164ft (outdoors) 25m/82ft (indoors)
 Operating Temperature : -20~+55°C(-4-131°F)
 Life Time : ≥100,000 times
 Shell Material : PC
 Installation Method : Screw locking
 Dimension : 4.13*1.69*1in (L105*W43*H25.5mm)

Color Option



Installation Note

There are arrows on the back of the switch to indicate the proper orientation, with the arrow pointing upwards.

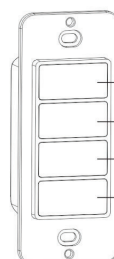


Keys Function

Once you have distinguished the orientation of the switch buttons, you can determine the function corresponding to each button.

The functions of the buttons, in order from top to bottom:

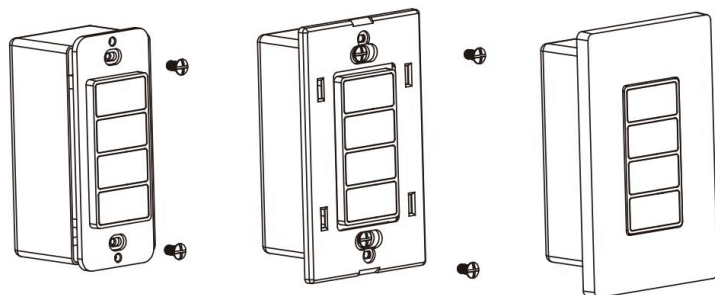
1. Click to turn on the light, hold to brighten.
2. Click to turn off the light, hold to dim down.
3. Click activate Scene A, hold to raise color temperature (Cooler White).
4. Click activate Scene B, hold to lower color temperature (Warmer White).



- Press to Turn ON. Hold to Dim Up/Brighten.
- Press to Turn OFF. Hold to Dim Down.
- Scene A / Raise CCT
- Scene B / Lower CCT

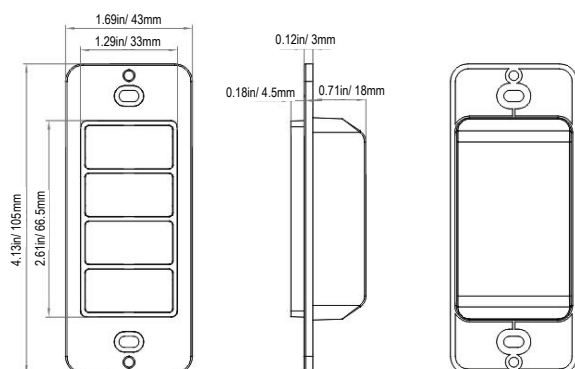
NOTE: Color temperature adjustments are only available for areas where a compatible dimmable white light fixture and the appropriate version of BlueMesh firmware have been added.

Installation Method



1. Screw the switch to the junction box.
2. Lock the switch panel to the switch with screws.
3. Attach the panel bezel to the panel.

PHYSICAL DIMENSIONS



WARRANTY

Five year limited warranty.

Specifications subject to change without notice.